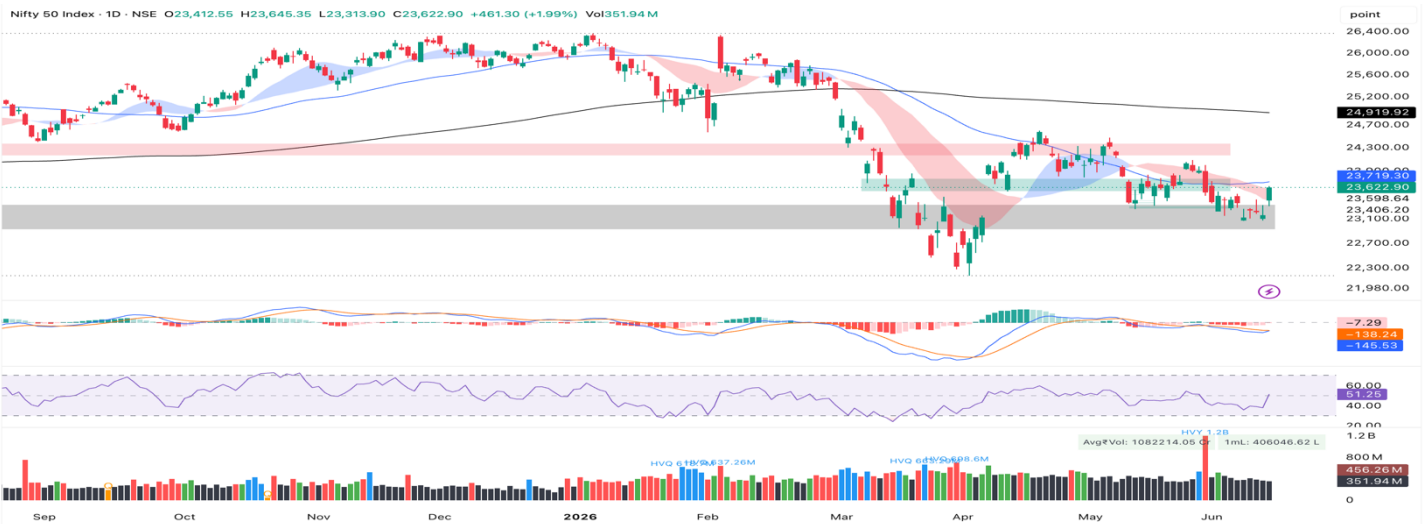


### NIFTY SPOT : IMMEDIATE SUPPORT AT 23500-23350



Source – TradingView, BP Equities Research

Nifty 50 closed at 23,623, surging 461 points in a large bullish candle. A textbook institutional accumulation candle confirming the demand zone absorption of the preceding eight sessions. Three simultaneous structural milestones were achieved: the cloud was reclaimed with the close; RSI crossed above 50 at 51.25 for the first time in the entire corrective phase; and the MACD histogram has collapsed and is just one session away from a bullish zero-line crossover. GIFT Nifty implies a gap-up, which would open the index above the 50 DMA and directly into the horizontal resistance zone at 24,000. This is the most structurally significant gap-up in the June series and must be treated with discipline. A sustained close above the 50 DMA at 23,800 with volume would confirm the recovery and target 24,000 followed by 24,200. Support shifts to 23,500 followed by 23,350.

**Intraday Nifty**

**Resistance – 24000-24200-24400**

**Support – 23500-23350-23200**

### BANKNIFTY SPOT : IMMEDIATE SUPPORT 55500-55000



Source – TradingView, BP Equities Research

Bank Nifty closed at 56,815, exploding 1,638 points in the largest single-session gain of this corrective phase. The index opened at 55,934, made a low of 55,726, setting up an imminent 200 DMA test that has been the medium-term structural target since the recovery began. A gap-up opening proportionate to GIFT Nifty cues would push BankNifty above the 200 DMA at the open. A 200 DMA reclaim on a closing basis would be the most significant structural milestone since the March peak and would shift the medium-term bias decisively from corrective to bullish. MACD histogram with MACD line is firmly above zero and RSI is at 65.37 approaching overbought territory confirming the momentum is sustained and broadening. However, RSI at 65.37 and a near-overbought condition on a gap-up opening warrants caution against chasing. Traders should allow the gap to settle and watch for price acceptance above the 200 DMA. The 57,000 level is now the defining pivot. Below it the 55,500 level is the immediate support.

**Intraday Banknifty**

**Resistance –57500-58000-58500**

**Support –55500-55000-54500**

## INTRADAY TRADER'S PICK

SR NO.	STOCK	ENTRY	TARGET 1	TARGET 2	STOP LOSS	RECOMMENDATION
1	ACE	931	940	949	922	BUY
2	AEROFLEX	448	452	456	444	BUY
3	BHAGCHEM	270	273	276	267	BUY
4	ONESOURCE	1613	1697	1581	1629	SELL
5	PREMIERENE	1035	1025	1015	1045	SELL

## MWPL

SCRIPS	Future Equivalent OI %	BAN
KAYNES	89%	YES
AMBER	90%	NO
SAIL	86%	NO
BANDHANBNK	85%	NO
AMBUJACEM	82%	NO
GLENMARK	82%	NO
KALYANKJIL	75%	NO
WIPRO	74%	NO
NBCC	74%	NO
NMDC	72%	NO

## DERIVATIVES

SCRIPS	CP AS ON 11/06/2026	CP AS ON 12/06/2026	CHA NGE (%)	OI AS ON 11/06/2026	OI AS ON 12/06/2026	CHA NGE (%)
BANKNIFTY	55272	56872.4	2.90	2629350	2668950	1.51
FINNIFTY	25178.8	25964.6	3.12	35940	36000	0.17
MIDCPNIFTY	13924.35	14337.4	2.97	2481600	2624400	5.75
NIFTY	23200	23686.6	2.10	21075015	20610460	-2.20
NIFTYNXT50	68780.6	70349.4	2.28	22900	22950	0.22

## DERIVATIVES HIGHLIGHTS

- Nifty Future closed with a Discount of 110 points v/s Premium of 66 points in the previous session.
- Nifty Future Open Interest Decreased by 2.20%. Bank Nifty Future Open Interest Increased by 1.51%
- Nifty PCR – OI Increased from 0.92 to 1.74; Nifty Bank PCR – OI Increased from 0.97 to 1.10
- FII Sold Rs. 1,082.18 crore, and DII Bought Rs. 5,341.29 crore in the Cash Segment. FII Bought Rs. 3,602.97 crore in Index Futures and Bought Rs. 12,982.14 crore in Index Options, while in Stock Futures, they Bought Rs. 3,840.87 crore and Bought Rs. 29.01 crore in Stock Options.
- Among the Index Option space, the Highest Open Interest Concentration was seen in the 22500 & 23000 Strike prices among the PE options. Whereas among CE Options, the Highest Open Interest Concentration was seen in 24000 & 24500 Strike price.
- The Highest Open Interest buildup among the PE options was seen in the 23400 & 22500 Strike prices. Among CE options, the highest build-up was seen in the 24000 & 25000 Strike prices.

### HIGHEST OI CONCENTRATION

PUT OPTION		CALL OPTION	
STRIKE PRICE	OPEN INT.	STRIKE PRICE	OPEN INT.
22500	13968175	24000	10501595
23000	11694410	24500	6905730
22000	11323520	23800	6348485
21200	9942075	25000	6110585
23400	9325680	23500	4732845

### HIGHEST CHANGE IN OI

PUT OPTION		CALL OPTION	
STRIKE PRICE	CHANGE IN OI	STRIKE PRICE	CHANGE IN OI
23400	7631910	24000	1338155
22500	6963385	25000	1252680
23500	6754410	24300	959920
23300	5906745	25100	642005
23000	4657055	25300	547820

## STOCK ANALYSIS

LONG BUILD UP	LONG UNWINDING	SHORT BUILD UP	SHORT COVERING
360ONE	COFORGE	BAJAJ-AUTO	ABCAPITAL
ABB	PREMIERENE	COALINDIA	AMBUJACEM
ADANIENSOL	TECHM	DIVISLAB	ASHOKLEY
ADANIENT		DRREDDY	ASIANPAINT
ADANIGREEN		HINDALCO	ASTRAL

## STATISTICS

### HIGHEST PREMIUM

SCRIPS	PREMIUM %	PRICE CHANGE %
BANDHANBNK	0.73	5.51
OBEROIRLTY	0.70	2.53
SAMMAANCAP	0.67	3.84
COALINDIA	0.64	-0.61
PRESTIGE	0.63	4.67

### HIGHEST DISCOUNT

SCRIPS	PREMIUM %	PRICE CHANGE %
KAYNES	-1.54	1.65
HDFCBANK	-1.39	3.74
NAM-INDIA	-0.89	4.55
IREDA	-0.82	3.24
BAJAJHLDNG	-0.74	3.02

### TOP 5 VOLUME GAINER FOR THE SESSION

SCRIPS	CP AS ON 11/06/2026	CP AS ON 12/06/2026	CHANGE (%)	VOL AS ON 11/06/2026	VOL AS ON 12/06/2026	CHANGE (%)
MOTILALOFS	833.45	892.85	7.13	519	3537	581.50
CHOLAFIN	1461.1	1575.9	7.86	1548	7444	380.88
ASHOKLEY	139.33	152.98	9.80	4099	18835	359.50
ICICIGI	1718.3	1699.3	-1.11	701	3100	342.23
NESTLEIND	1429.3	1382.2	-3.30	1766	6904	290.94

## TOP 5 VOLUME LOSER FOR THE SESSION

SCRIPS	CP AS ON 11/06/2026	CP AS ON 12/06/2026	CHA NGE (%)	VOL AS ON 11/06/2026	VOL AS ON 12/06/2026	CHA NGE (%)
OFSS	9317	9372.5	0.60	5205	2309	-55.64
MAXHEALTH	1014.7	1015.8	0.11	3548	1772	-50.06
ICICIBANK	1319.2	1344.2	1.90	42279	23244	-45.02
SOLARINDS	17228	17191	-0.21	3805	2196	-42.29
TORNTPHARM	4577	4598.9	0.48	6308	4069	-35.49

## TOP 10 OPEN INTEREST GAINER FOR THE SESSION

SCRIPS	CP AS ON 11/06/2026	CP AS ON 12/06/2026	CHA NGE (%)	OI AS ON 11/06/2026	OI AS ON 12/06/2026	CHA NGE (%)
NUVAMA	1504.1	1585	5.38	1576000	1781500	13.04
RADICO	3457.6	3559.3	2.94	168600	187350	11.12
HINDALCO	1029.2	1027.3	-0.18	35974400	39188100	8.93
MARUTI	13161	13439	2.11	3303250	3519600	6.55
COCHINSHIP	1383.2	1424.8	3.01	4117200	4372400	6.20
ONGC	253.1	247.5	-2.21	89752500	94925250	5.76
MIDCPNIFTY	13924.35	14337.4	2.97	2481600	2624400	5.75
WAAREEENER	3020	3038.1	0.60	5367425	5668075	5.60
NESTLEIND	1429.3	1382.2	-3.30	11782500	12441000	5.59
TVSMOTOR	3303.4	3332.3	0.87	11857650	12513375	5.53

## TOP 10 OPEN INTEREST LOSER FOR THE SESSION

SCRIPS	CP AS ON 11/06/2026	CP AS ON 12/06/2026	CHA NGE (%)	OI AS ON 11/06/2026	OI AS ON 12/06/2026	CHA NGE (%)
ASHOKLEY	139.33	152.98	9.80	216805000	199055000	-8.19
GODFRYPHLP	2204.4	2313.8	4.96	2214850	2055075	-7.21
CDSL	1188.6	1234	3.82	12753275	11969525	-6.15
BOSCHLTD	37645	39155	4.01	312625	294625	-5.76
PGEL	460.65	485.6	5.42	15488800	14696500	-5.12
BANKBARODA	268	276.15	3.04	133178175	126947925	-4.68
PATANJALI	419.05	426.45	1.77	28935000	27649975	-4.44
BLUESTARCO	1561.9	1589.4	1.76	2756650	2636400	-4.36
BHARTIARTL	1790.9	1829.4	2.15	63612000	60987625	-4.13
MUTHOOTFIN	2899.7	3050.8	5.21	4459125	4282300	-3.97

## PIVOT REPORT NIFTY F&O

SYMBOL	LTP	PIVOT	SUP3	SUP2	SUP1	RES1	RES2	RES3
360 ONE WAM LIMITED	1064.1	1055.7	999.3	1015.3	1039.7	1080.1	1096.1	1120.5
ABB INDIA LIMITED	6719.0	6729.2	6480.3	6566.7	6642.8	6805.3	6891.7	6967.8
ADITYA BIRLA CAPITAL LTD.	336.6	338.4	324.2	329.5	333.1	341.9	347.2	350.8
ADANI ENERGY SOLUTION LTD	1466.7	1489.7	1357.1	1409.0	1437.8	1518.5	1570.4	1599.2
ADANI ENTERPRISES LIMITED	2908.8	2923.6	2808.6	2851.9	2880.3	2952.0	2995.3	3023.7
ADANI GREEN ENERGY LTD	1454.5	1466.5	1394.1	1422.2	1438.4	1482.7	1510.8	1527.0
ADANI PORT & SEZ LTD	1787.1	1796.4	1733.7	1757.7	1772.4	1811.1	1835.1	1849.8
ADANI POWER LTD	215.5	217.6	205.2	210.0	212.8	220.3	225.1	227.8
ALKEM LABORATORIES LTD.	5301.5	5299.3	5191.7	5226.8	5264.2	5336.7	5371.8	5409.2
AMBER ENTERPRISES (I) LTD	7290.0	7374.2	6854.3	7055.7	7172.8	7491.3	7692.7	7809.8
AMBUJA CEMENTS LTD	406.1	407.0	398.5	401.7	403.9	409.2	412.4	414.6
ANGEL ONE LIMITED	323.8	326.8	305.5	313.6	318.7	331.9	340.0	345.1
APL APOLLO TUBES LTD	1764.1	1761.4	1713.6	1728.6	1746.4	1779.2	1794.2	1812.0
APOLLO HOSPITALS ENTER. L	8493.0	8483.0	8329.0	8377.0	8435.0	8541.0	8589.0	8647.0
ASHOK LEYLAND LTD	138.6	139.2	134.6	136.3	137.4	140.3	142.0	143.2
ASIAN PAINTS LIMITED	2690.9	2689.5	2636.7	2653.8	2672.4	2708.1	2725.2	2743.8
ASTRAL LIMITED	1490.2	1497.3	1447.6	1466.5	1478.4	1509.2	1528.1	1540.0
AU SMALL FINANCE BANK LTD	963.3	961.0	924.4	935.8	949.6	974.7	986.1	999.9
AUROBINDO PHARMA LTD	1464.1	1465.0	1439.6	1448.4	1456.2	1472.8	1481.6	1489.4
AXIS BANK LIMITED	1317.3	1321.4	1271.0	1289.2	1303.2	1335.4	1353.6	1367.6
BAJAJ AUTO LIMITED	10114.0	10150.0	9871.0	9976.0	10045.0	10219.0	10324.0	10393.0
BAJAJ FINSERV LTD.	1645.1	1648.1	1619.4	1630.0	1637.5	1655.6	1666.2	1673.7
BAJAJ HOLDINGS & INVS LTD	9863.0	9911.3	9630.7	9740.3	9801.7	9972.7	10082.3	10143.7
BAJAJ FINANCE LIMITED	870.6	875.3	845.3	856.9	863.7	882.2	893.8	900.6
BANDHAN BANK LIMITED	193.9	196.4	182.9	188.2	191.0	199.2	204.6	207.4
BANK OF BARODA	267.6	266.1	257.1	259.6	263.6	270.1	272.6	276.6
BANK OF INDIA	141.4	142.0	135.4	137.8	139.6	143.8	146.2	148.0
BHARAT DYNAMICS LIMITED	1160.3	1166.4	1120.7	1138.0	1149.1	1177.5	1194.8	1205.9
BHARAT ELECTRONICS LTD	402.3	403.8	394.7	398.2	400.3	405.9	409.4	411.5
BHARAT FORGE LTD	1942.9	1945.6	1889.9	1909.4	1926.1	1962.3	1981.8	1998.5
BHARTI AIRTEL LIMITED	1782.6	1782.4	1741.4	1755.0	1768.8	1796.2	1809.8	1823.6
BHEL	370.7	372.6	353.8	360.7	365.7	377.6	384.5	389.5
BIOCON LIMITED.	416.0	416.0	404.5	408.3	412.1	419.8	423.6	427.4
BLUE STAR LIMITED	1556.8	1561.7	1521.4	1536.5	1546.6	1571.8	1586.9	1597.0
BOSCH LIMITED	37565.0	37795.0	36360.0	36915.0	37240.0	38120.0	38675.0	39000.0
BHARAT PETROLEUM CORP LT	286.4	284.7	274.8	277.5	281.9	289.1	291.8	296.2
BRITANNIA INDUSTRIES LTD	5113.0	5133.3	4982.2	5039.3	5076.2	5170.2	5227.3	5264.2
BSE LIMITED	3888.3	3902.5	3761.7	3813.4	3850.8	3939.9	3991.6	4029.0
COMPUTER AGE MNGT SER LTD	722.7	726.9	697.6	708.8	715.7	733.8	745.0	751.9
CANARA BANK	131.5	132.0	127.0	128.8	130.2	133.3	135.2	136.5
CENTRAL DEPO SER (I) LTD	1190.2	1190.2	1168.5	1175.7	1183.0	1197.5	1204.7	1212.0
CG POWER AND IND SOL LTD	901.4	908.9	863.8	881.4	891.4	918.9	936.5	946.5

## PIVOT REPORT NIFTY F&O

SYMBOL	LTP	PIVOT	SUP3	SUP2	SUP1	RES1	RES2	RES3
CHOLAMANDALAM IN & FIN CO	1454.9	1459.2	1421.0	1435.2	1445.0	1469.0	1483.2	1493.0
CIPLA LTD	1383.3	1382.7	1357.4	1365.6	1374.5	1391.6	1399.8	1408.7
COAL INDIA LTD	446.2	447.8	436.6	440.8	443.5	450.5	454.7	457.4
COCHIN SHIPYARD LIMITED	1387.8	1385.3	1338.7	1353.4	1370.6	1402.5	1417.2	1434.4
COFORGE LIMITED	1393.8	1386.4	1310.6	1333.4	1363.6	1416.6	1439.4	1469.6
COLGATE PALMOLIVE LTD.	2028.6	2038.6	1970.0	1996.2	2012.4	2054.8	2081.0	2097.2
CONTAINER CORP OF IND LTD	440.3	440.5	430.7	434.1	437.2	443.6	447.0	450.1
CROMPT GREA CON ELEC LTD	253.0	254.0	245.4	248.6	250.8	256.2	259.4	261.6
CUMMINS INDIA LTD	5557.0	5602.5	5327.0	5434.0	5495.5	5664.0	5771.0	5832.5
DABUR INDIA LTD	421.7	424.0	407.3	413.6	417.7	428.1	434.4	438.5
DALMIA BHARAT LIMITED	1610.2	1616.0	1571.3	1588.1	1599.2	1627.1	1643.9	1655.0
DELHIVERY LIMITED	432.3	432.4	419.3	423.7	428.0	436.6	441.0	445.3
DIVI S LABORATORIES LTD	6655.5	6666.8	6518.7	6571.8	6613.7	6708.7	6761.8	6803.7
DIXON TECHNO (INDIA) LTD	11371.0	11397.0	11009.0	11147.0	11259.0	11509.0	11647.0	11759.0
DLF LIMITED	563.0	561.4	546.8	551.1	557.1	567.4	571.7	577.7
AVENUE SUPERMARTS LIMITED	3987.0	4017.0	3831.0	3903.0	3945.0	4059.0	4131.0	4173.0
DR. REDDY S LABORATORIES	1276.0	1276.0	1247.1	1256.7	1266.4	1285.7	1295.3	1305.0
EICHER MOTORS LTD	7179.5	7161.5	6947.0	7012.5	7096.0	7245.0	7310.5	7394.0
ETERNAL LIMITED	235.2	235.9	229.5	231.9	233.5	237.6	240.0	241.6
EXIDE INDUSTRIES LTD	385.7	384.6	374.0	377.2	381.4	388.9	392.1	396.3
FEDERAL BANK LTD	309.8	309.5	302.7	304.9	307.3	312.0	314.2	316.6
FORCE MOTORS LIMITED	17094.0	17080.7	16565.3	16732.7	16913.3	17261.3	17428.7	17609.3
FORTIS HEALTHCARE LTD	989.0	988.4	957.7	967.7	978.4	999.1	1009.1	1019.8
GAIL (INDIA) LTD	166.1	166.3	161.9	163.4	164.8	167.7	169.2	170.6
GLENMARK PHARMACEUTICALS	2144.5	2151.7	2103.3	2121.8	2133.2	2163.1	2181.6	2193.0
GMR AIRPORTS LIMITED	100.1	100.1	97.0	98.0	99.1	101.2	102.3	103.3
GODFREY PHILLIPS INDIA LT	2193.2	2204.6	2123.0	2154.0	2173.6	2224.2	2255.2	2274.8
GODREJ CONSUMER PRODUCTS	1008.9	1014.2	978.3	992.0	1000.5	1022.7	1036.4	1044.9
GODREJ PROPERTIES LTD	1618.0	1622.4	1576.8	1593.5	1605.7	1634.6	1651.3	1663.5
GRASIM INDUSTRIES LTD	3089.5	3081.4	2990.7	3018.2	3053.9	3117.1	3144.6	3180.3
GE VERNOVA T&D INDIA LTD	4735.0	4775.0	4500.0	4605.0	4670.0	4840.0	4945.0	5010.0
HINDUSTAN AERONAUTICS LTD	4172.3	4185.2	4083.7	4121.8	4147.1	4210.5	4248.6	4273.9
HAVELLS INDIA LIMITED	1129.0	1136.2	1089.6	1107.5	1118.3	1147.0	1164.9	1175.7
HCL TECHNOLOGIES LTD	1110.2	1104.6	1070.6	1080.1	1095.1	1119.6	1129.1	1144.1
HDFC AMC LIMITED	2389.8	2408.0	2300.2	2342.2	2366.0	2431.8	2473.8	2497.6
HDFC BANK LTD	744.6	746.9	721.9	731.0	737.8	753.7	762.8	769.6
HDFC LIFE INS CO LTD	545.3	546.2	534.6	538.8	542.0	549.5	553.7	556.9
HERO MOTOCORP LIMITED	4836.2	4840.5	4741.1	4775.7	4805.9	4870.7	4905.3	4935.5
HINDALCO INDUSTRIES LTD	1024.3	1028.6	1002.7	1012.8	1018.5	1034.3	1044.4	1050.1
HINDUSTAN PETROLEUM CORP	365.7	366.4	349.3	355.2	360.5	371.6	377.5	382.8
HINDUSTAN UNILEVER LTD.	2139.8	2146.7	2098.7	2117.0	2128.4	2158.1	2176.4	2187.8
HINDUSTAN ZINC LIMITED	545.0	544.6	514.9	524.7	534.8	554.8	564.6	574.7

## PIVOT REPORT NIFTY F&O

SYMBOL	LTP	PIVOT	SUP3	SUP2	SUP1	RES1	RES2	RES3
HYUNDAI MOTOR INDIA LTD	1940.1	1918.0	1797.1	1830.0	1885.1	1973.1	2006.0	2061.1
ICICI BANK LTD.	1317.0	1312.2	1244.8	1265.7	1291.3	1337.8	1358.7	1384.3
ICICI LOMBARD GIC LIMITED	1712.4	1718.6	1673.4	1690.5	1701.5	1729.6	1746.7	1757.7
ICICI PRU LIFE INS CO LTD	460.4	462.1	451.0	455.2	457.8	464.7	468.9	471.5
VODAFONE IDEA LIMITED	14.2	14.1	13.0	13.4	13.8	14.5	14.9	15.3
IDFC FIRST BANK LIMITED	73.0	72.9	70.9	71.6	72.3	73.6	74.2	74.9
INDIAN ENERGY EXC LTD	117.1	117.6	114.1	115.4	116.3	118.4	119.8	120.6
THE INDIAN HOTELS CO. LTD	655.7	658.5	639.7	646.9	651.3	662.9	670.1	674.5
INDIAN BANK	825.7	825.5	801.7	809.6	817.6	833.6	841.5	849.5
INTERGLOBE AVIATION LTD	4502.4	4507.5	4384.9	4427.5	4464.9	4544.9	4587.5	4624.9
INDUSIND BANK LIMITED	889.0	889.4	865.4	873.6	881.3	897.1	905.3	913.0
INDUS TOWERS LIMITED	413.0	413.9	400.2	405.0	409.0	417.9	422.7	426.7
INFOSYS LIMITED	1114.6	1119.1	1079.8	1094.4	1104.5	1129.2	1143.8	1153.9
INOX WIND LIMITED	81.1	81.7	77.8	79.3	80.2	82.6	84.0	84.9
INDIAN OIL CORP LTD	134.2	134.5	131.2	132.4	133.3	135.4	136.6	137.5
INDIAN RENEWABLE ENERGY	118.3	118.5	115.9	116.8	117.6	119.2	120.1	120.9
INDIAN RAILWAY FIN CORP L	93.3	93.4	90.9	91.8	92.6	94.2	95.1	95.8
ITC LTD	282.4	282.3	279.3	280.2	281.3	283.4	284.3	285.4
JINDAL STEEL LIMITED	1121.3	1122.7	1080.3	1094.9	1108.1	1135.9	1150.5	1163.7
JIO FIN SERVICES LTD	228.0	228.3	223.8	225.4	226.7	229.6	231.2	232.5
JSW ENERGY LIMITED	552.3	556.4	523.8	536.1	544.2	564.5	576.8	584.9
JSW STEEL LIMITED	1282.3	1278.9	1232.0	1246.5	1264.4	1296.8	1311.3	1329.2
JUBILANT FOODWORKS LTD	413.6	416.2	398.9	405.5	409.6	420.3	426.9	431.0
KALYAN JEWELLERS IND LTD	330.8	332.0	314.9	321.0	325.9	336.9	343.0	347.9
KAYNES TECHNOLOGY IND LTD	3026.9	3051.5	2902.0	2960.0	2993.5	3085.0	3143.0	3176.5
KEI INDUSTRIES LTD.	5181.5	5178.2	5004.3	5061.2	5121.3	5238.3	5295.2	5355.3
KFIN TECHNOLOGIES LIMITED	805.6	806.9	783.9	792.0	798.8	813.7	821.8	828.6
KOTAK MAHINDRA BANK LTD	393.4	392.6	370.0	377.3	385.3	400.7	408.0	416.0
KPIT TECHNOLOGIES LIMITED	736.9	732.5	698.3	708.3	722.6	746.8	756.8	771.1
LAURUS LABS LIMITED	1390.8	1392.1	1343.0	1359.8	1375.3	1407.6	1424.4	1439.9
LIC HOUSING FINANCE LTD	535.9	538.1	519.7	526.5	531.2	542.8	549.6	554.3
LIFE INSURA CORP OF INDIA	393.2	393.6	386.6	389.1	391.1	395.7	398.2	400.2
LODHA DEVELOPERS LIMITED	868.1	862.5	830.0	839.0	853.5	877.1	886.1	900.6
LARSEN & TOUBRO LTD.	3862.0	3875.4	3785.6	3820.0	3841.0	3896.4	3930.8	3951.8
L&T FINANCE LIMITED	256.9	257.9	250.4	253.3	255.1	259.7	262.6	264.4
LTM LIMITED	3824.9	3850.4	3666.9	3736.6	3780.7	3894.5	3964.2	4008.3
LUPIN LIMITED	2273.3	2268.5	2211.2	2228.7	2251.0	2290.8	2308.3	2330.6
MAHINDRA & MAHINDRA LTD	3000.9	2971.2	2818.3	2859.4	2930.1	3041.9	3083.0	3153.7
MANAPPURAM FINANCE LTD	292.1	289.4	274.4	278.5	285.3	296.2	300.3	307.1
MANKIND PHARMA LIMITED	2372.7	2377.4	2287.3	2318.9	2345.8	2404.3	2435.9	2462.8
MARICO LIMITED	810.8	813.9	788.7	798.1	804.5	820.2	829.6	836.0
MARUTI SUZUKI INDIA LTD.	13098.0	13094.3	12722.7	12845.3	12971.7	13220.7	13343.3	13469.7

## PIVOT REPORT NIFTY F&O

SYMBOL	LTP	PIVOT	SUP3	SUP2	SUP1	RES1	RES2	RES3
MAX HEALTHCARE INS LTD	1009.6	1010.8	985.5	994.3	1002.0	1018.5	1027.3	1035.0
MAZAGON DOCK SHIPBUIL LTD	2347.5	2347.6	2250.0	2282.6	2315.0	2380.0	2412.6	2445.0
MULTI COMMODITY EXCHANGE	2778.8	2761.2	2642.4	2676.1	2727.5	2812.6	2846.3	2897.7
MAX FINANCIAL SERV LTD	1562.1	1573.8	1492.4	1523.4	1542.8	1593.2	1624.2	1643.6
SAMVRDHNA MTHRSN INTL LTD	140.7	140.5	137.4	138.3	139.5	141.7	142.6	143.8
MOTILAL OSWAL FIN LTD	831.6	834.8	811.0	820.0	825.8	840.6	849.6	855.4
MPHISIS LIMITED	2277.8	2267.6	2187.2	2210.6	2244.2	2301.2	2324.6	2358.2
MUTHOOT FINANCE LIMITED	2890.0	2876.8	2740.5	2781.5	2835.8	2931.1	2972.1	3026.4
NIPPON L I A M LTD	1041.6	1046.9	1009.2	1023.5	1032.6	1056.0	1070.3	1079.4
NATIONAL ALUMINIUM CO LTD	370.6	373.8	350.2	359.2	364.9	379.5	388.5	394.2
INFO EDGE (I) LTD	963.8	961.3	929.8	939.4	951.6	973.5	983.1	995.3
NBCC (INDIA) LIMITED	100.5	101.3	94.3	96.9	98.7	103.1	105.7	107.5
NESTLE INDIA LIMITED	1422.5	1429.1	1388.2	1404.0	1413.3	1438.4	1454.2	1463.5
NHPC LTD	72.1	72.2	70.4	71.0	71.6	72.8	73.4	73.9
NMDC LTD.	88.5	88.3	86.1	86.8	87.6	89.2	89.8	90.7
NTPC LTD	351.9	351.3	344.8	346.8	349.3	353.9	355.9	358.4
NUVAMA WEALTH MANAGE LTD	1510.2	1515.5	1451.2	1474.4	1492.3	1533.4	1556.6	1574.5
FSN E COMMERCE VENTURES	260.3	261.0	254.5	256.9	258.6	262.7	265.1	266.8
OBEROI REALTY LIMITED	1582.7	1585.2	1549.8	1562.4	1572.6	1595.4	1608.0	1618.2
ORACLE FIN SERV SOFT LTD.	9265.5	9251.5	8675.0	8862.5	9064.0	9453.0	9640.5	9842.0
OIL INDIA LTD	429.4	431.2	412.5	419.3	424.3	436.2	443.0	448.0
OIL AND NATURAL GAS CORP.	252.6	253.1	243.2	246.6	249.6	256.1	259.5	262.5
PAGE INDUSTRIES LTD	37740.0	37901.7	36508.3	37026.7	37383.3	38258.3	38776.7	39133.3
PATANJALI FOODS LIMITED	419.1	418.8	404.3	409.0	414.1	423.8	428.5	433.6
ONE 97 COMMUNICATIONS LTD	1023.1	1033.4	954.5	984.2	1003.7	1052.9	1082.6	1102.1
PERSISTENT SYSTEMS LTD	4874.0	4846.2	4560.8	4646.7	4760.3	4959.8	5045.7	5159.3
PETRONET LNG LIMITED	263.1	264.0	253.5	257.3	260.2	266.9	270.7	273.6
POWER FIN CORP LTD.	413.6	418.7	390.0	401.3	407.4	424.8	436.1	442.2
PG ELECTROPLAST LTD	459.0	462.0	441.1	449.0	454.0	467.0	474.9	479.9
THE PHOENIX MILLS LTD	1732.8	1738.8	1683.8	1704.1	1718.5	1753.2	1773.5	1787.9
PIDILITE INDUSTRIES LTD	1498.8	1499.2	1470.9	1480.5	1489.6	1508.3	1517.9	1527.0
PI INDUSTRIES LTD	2801.2	2797.7	2728.2	2750.2	2775.7	2823.2	2845.2	2870.7
PUNJAB NATIONAL BANK	106.2	106.0	103.5	104.3	105.3	107.0	107.8	108.7
PNB HOUSING FIN LTD.	953.9	957.9	926.2	938.1	946.0	965.8	977.7	985.6
PB FINTECH LIMITED	1504.2	1508.8	1444.8	1467.7	1485.9	1527.0	1549.9	1568.1
POLYCARB INDIA LIMITED	9372.0	9416.5	9135.5	9244.0	9308.0	9480.5	9589.0	9653.0
POWER GRID CORP. LTD.	286.7	287.7	280.5	283.3	285.0	289.4	292.2	293.9
HITACHI ENERGY INDIA LTD	33250.0	33453.3	31716.7	32363.3	32806.7	33896.7	34543.3	34986.7
PREMIER ENERGIES LIMITED	1058.0	1060.1	1014.3	1030.3	1044.1	1073.9	1089.9	1103.7
PRESTIGE ESTATE LTD	1325.3	1324.1	1287.3	1299.2	1312.2	1337.1	1349.0	1362.0
RADICO KHAITAN LTD	3449.9	3454.2	3392.6	3414.6	3432.2	3471.8	3493.8	3511.4
RBL BANK LIMITED	359.1	359.4	338.9	345.8	352.5	366.1	373.0	379.7

## PIVOT REPORT NIFTY F&O

SYMBOL	LTP	PIVOT	SUP3	SUP2	SUP1	RES1	RES2	RES3
REC LIMITED	336.9	340.7	318.0	326.9	331.9	345.7	354.6	359.6
RELIANCE INDUSTRIES LTD	1263.0	1264.1	1229.3	1241.3	1252.1	1274.9	1286.9	1297.7
RAIL VIKAS NIGAM LIMITED	222.2	223.6	214.7	218.1	220.2	225.6	229.0	231.0
STEEL AUTHORITY OF INDIA	181.4	181.0	174.7	176.7	179.0	183.4	185.4	187.7
SAMMAAN CAPITAL LIMITED	168.0	169.9	158.1	162.7	165.3	172.6	177.1	179.8
SBI CARDS & PAY SER LTD	568.3	570.9	549.3	557.4	562.8	576.4	584.5	589.9
SBI LIFE INSURANCE CO LTD	1719.1	1721.1	1666.4	1685.3	1702.2	1738.0	1756.9	1773.8
STATE BANK OF INDIA	1000.7	1001.0	976.3	984.6	992.7	1009.1	1017.4	1025.5
SHREE CEMENT LIMITED	23700.0	23680.0	23210.0	23360.0	23530.0	23850.0	24000.0	24170.0
SHRIRAM FINANCE LIMITED	886.3	887.2	860.9	870.0	878.1	895.3	904.4	912.5
SIEMENS LTD	3522.0	3536.3	3401.7	3451.3	3486.7	3571.7	3621.3	3656.7
SOLAR INDUSTRIES (I) LTD	17141.0	17405.3	15849.7	16456.3	16798.7	17747.7	18354.3	18696.7
SONA BLW PRECISION FRGS L	585.1	587.6	566.2	574.1	579.6	593.1	601.0	606.5
SRF LTD	2658.4	2680.8	2543.6	2596.8	2627.6	2711.6	2764.8	2795.6
SUN PHARMACEUTICAL IND L	1794.2	1792.6	1754.0	1766.3	1780.3	1806.6	1818.9	1832.9
SUPREME INDUSTRIES LTD	3443.8	3460.2	3336.0	3382.9	3413.3	3490.6	3537.5	3567.9
SUZLON ENERGY LIMITED	53.3	53.5	51.8	52.4	52.9	53.9	54.5	55.0
SWIGGY LIMITED	240.2	240.0	230.8	233.8	237.0	243.2	246.2	249.4
TATA CONSUMER PRODUCT LTD	1108.6	1110.9	1088.7	1096.9	1102.7	1116.7	1124.9	1130.7
TATA ELXSI LIMITED	4009.1	4023.4	3867.7	3924.4	3966.7	4065.7	4122.4	4164.7
TATA POWER CO LTD	390.3	391.7	378.7	383.5	386.9	395.1	399.9	403.3
TATA STEEL LIMITED	198.0	197.8	192.9	194.5	196.2	199.5	201.1	202.8
TATA CONSULTANCY SERV LT	2135.6	2133.4	2067.6	2088.8	2112.2	2156.8	2178.0	2201.4
TECH MAHINDRA LIMITED	1465.1	1461.6	1397.0	1417.4	1441.2	1485.4	1505.8	1529.6
TUBE INVEST OF INDIA LTD	2975.3	3004.0	2820.6	2891.3	2933.3	3046.0	3116.7	3158.7
TITAN COMPANY LIMITED	4025.2	4019.2	3861.9	3912.3	3968.8	4075.7	4126.1	4182.6
TATA MOTORS PASS VEH LTD	375.9	375.6	366.7	369.5	372.7	378.8	381.6	384.8
TORRENT PHARMACEUTICALS L	4572.2	4538.3	4284.6	4357.9	4465.0	4645.4	4718.7	4825.8
TRENT LTD	2710.9	2713.6	2607.3	2643.6	2677.3	2747.3	2783.6	2817.3
TVS MOTOR COMPANY LTD	3287.4	3300.0	3210.9	3244.8	3266.1	3321.3	3355.2	3376.5
ULTRATECH CEMENT LIMITED	10830.0	10824.7	10479.3	10592.7	10711.3	10943.3	11056.7	11175.3
UNION BANK OF INDIA	164.5	164.4	160.3	161.6	163.1	165.8	167.1	168.6
UNITED SPIRITS LIMITED	1257.8	1262.0	1225.2	1238.9	1248.3	1271.4	1285.1	1294.5
UNO MINDA LIMITED	1067.3	1065.9	1029.9	1041.4	1054.4	1078.9	1090.4	1103.4
UPL LIMITED	593.8	598.5	570.4	581.3	587.5	604.7	615.6	621.8
VARUN BEVERAGES LIMITED	519.9	523.6	501.0	509.8	514.8	528.6	537.4	542.4
VEDANTA LIMITED	304.9	302.6	277.9	285.4	295.1	312.3	319.8	329.5
VISHAL MEGA MART LIMITED	117.7	117.6	112.8	114.4	116.0	119.2	120.8	122.4
VOLTAS LTD	1277.3	1282.1	1242.2	1257.1	1267.2	1292.2	1307.1	1317.2
WAAREE ENERGIES LIMITED	3013.9	2998.4	2920.8	2941.5	2977.7	3034.6	3055.3	3091.5
WIPRO LTD	177.4	177.1	173.7	174.8	176.1	178.4	179.5	180.8
YES BANK LIMITED	22.2	22.4	21.4	21.8	22.0	22.6	23.0	23.2

## PIVOT REPORT NIFTY F&O

SYMBOL	LTP	PIVOT	SUP3	SUP2	SUP1	RES1	RES2	RES3
ZYDUS LIFESCIENCES LTD	1105.9	1102.5	1075.4	1083.3	1094.6	1113.8	1121.7	1133.0

**TECHNICAL RESEARCH DESK**

Vikas Gupta	Technical Analyst	vikas.gupta@bpwealth.com
Bhavya Shah	Technical Analyst	bhavya.shah@bpwealth.com

**TECHNICAL RESEARCH DESK****TEL: +91 22 61596131/36****INSTITUTIONAL SALES DESK****TEL: +91 22 61596403/04/05****DISCLAIMER APPENDIX****Analyst s holding in the Stock : Nil****Analyst s Certification:**

We analysts and the authors of this report, hereby certify that all of the views expressed in this research report accurately reflect our personal views about any and all of the subject issuer s or securities. We also certify that no part of our compensation was, is, or will be directly or indirectly related to the specific recommendation s or view s in this report. Analysts aren't registered as research analysts by FINRA and might not be an associated person of the BP Equities Pvt. Ltd. Institutional Equities.

**General Disclaimer**

This report has been prepared by the research department of BP EQUITIES Pvt. Ltd, is for information purposes only. This report is not construed as an offer to sell or the solicitation of an offer to buy or sell any security in any jurisdiction where such an offer or solicitation would be illegal.

BP EQUITIES Pvt. Ltd have exercised due diligence in checking the correctness and authenticity of the information contained herein, so far as it relates to current and historical information, but do not guarantee its accuracy or completeness. The opinions expressed are our current opinions as of the date appearing in the material and may be subject to change from time to time. Prospective investors are cautioned that any forward looking statement are not predictions and are subject to change without prior notice.

Recipients of this material should rely on their own investigations and take their own professional advice. BP EQUITIES Pvt. Ltd or any of its affiliates or employees shall not be in any way responsible for any loss or damage that may arise to any person from any inadvertent error in the information contained in this report. BP EQUITIES Pvt. Ltd. or any of its affiliates or employees do not provide, at any time, any express or implied warranty of any kind, regarding any matter pertaining to this report, including without limitation the implied warranties of merchantability, fitness for a particular purpose, and non-infringement. The recipients of this report should rely on their own investigations.

BP EQUITIES Pvt. Ltd and/or its affiliates and/or employees may have interests/ positions, financial or otherwise in the securities mentioned in this report. Opinions expressed are our current opinions as of the date appearing on this material only. While we endeavor to update on a reasonable basis the information discussed in this material, there may be regulatory, compliance, or other reasons that prevent us from doing so.

This report is not directed to or intended for display, downloading, printing, reproducing or for distribution to or use by any person in any locality, state and country or other jurisdiction where such distribution, publication or use would be contrary to the law or regulation or would subject to BP EQUITIES Pvt. Ltd or any of its affiliates to any registration or licensing requirement within such jurisdiction.

**Corporate Office :**

4th floor,  
Rustom Bldg,  
29, Veer Nariman Road, Fort, Mumbai-  
400001

Phone- +91 22 6159 6464

Fax-+91 22 6159 6160

Website - [www.bpwealth.com](http://www.bpwealth.com)**Registered Office :**

24/26, 1st Floor, Cama Building,  
Dalal street, Fort,

Mumbai-400001

BP Equities Pvt. Ltd.

CIN No: U67120MH1997PTC107392